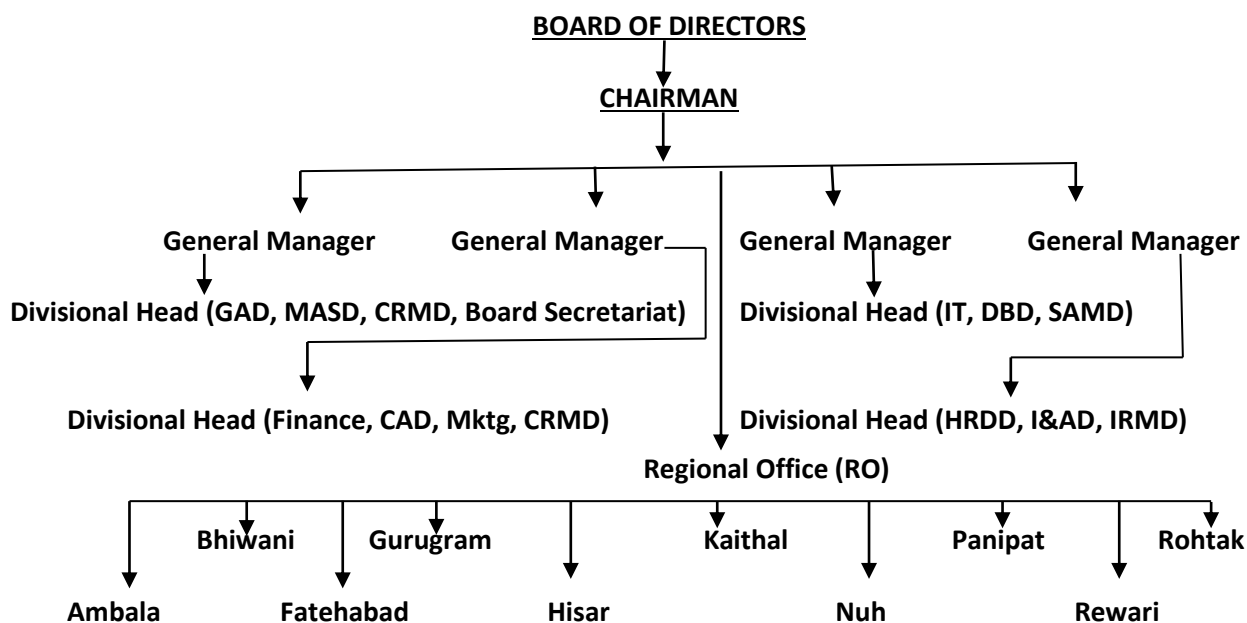


ORGANISATION CHART OF SHGB



- | | | |
|---------------|--|---|
| RO Ambala : | } | Branches of District Ambala, Panchkula and Yamunanagar. |
| RO Bhiwani: | | Branches of District Bhiwani and Charkhi Dadri. |
| RO Fatehabad: | | Branches of District Fatehabad and Sirsa. |
| RO Gurugram: | | Branches of District Gurugram and Faridabad. |
| RO Hisar: | | Branches of District Hisar and Jind. |
| RO Kaithal: | | Branches of District Kaithal and Kurukshetra. |
| RO Nuh: | | Branches of District Mewat and Palwal. |
| RO Panipat: | | Branches of District Panipat, Sonapat and Karnal. |
| RO Rewari: | | Branches of District Mahendergarh and Rewari. |
| RO Rohtak: | Branches of District Jhajjar and Rohtak. | |